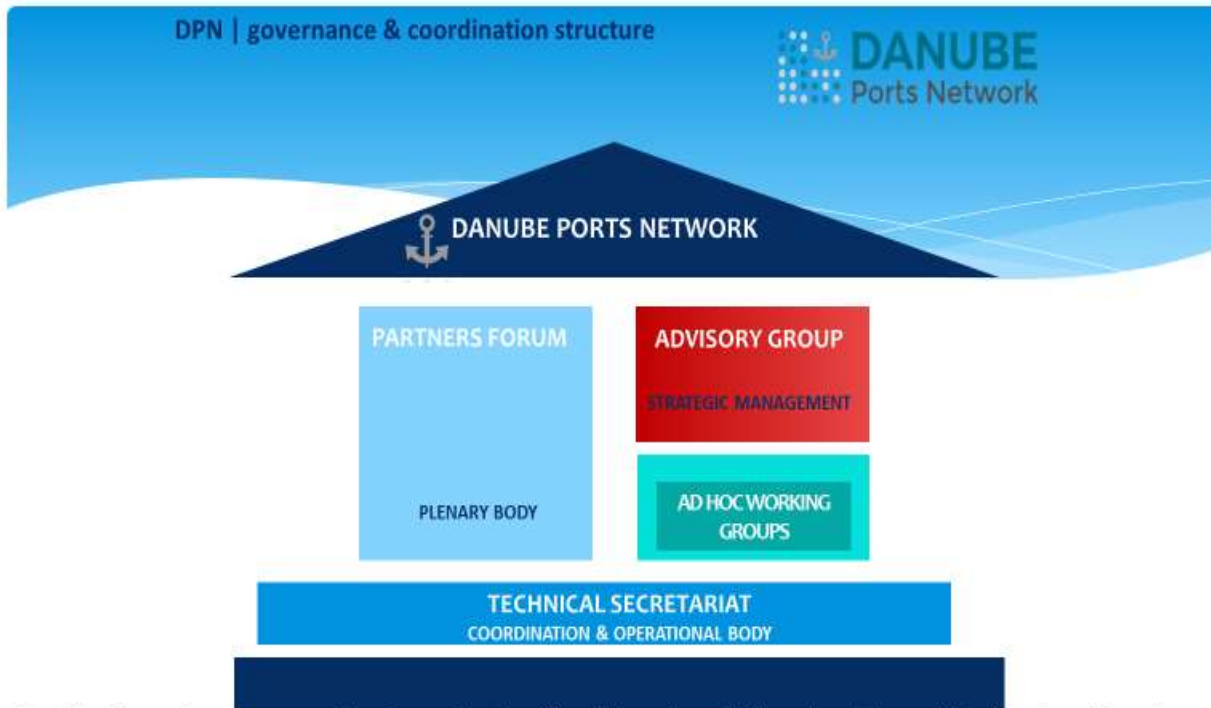


# Solution for integrated logistic, 17th of November, 2020.



➤ The Network acts as a regional coordination & collaboration platform involving public & private Danube port organisations

- We badly need a new, more dynamic, sustainable network
- We have to reduce the development and innovation gap between the Upper stream and Lower stream of Danube
- The better cooperation is a must
- A stronger and more coordinated voice is needed as a model of Rhine dominance at regional and EU level



Hungarian Federation of Danube Ports

Postal: H-1139 Budapest, Forgách u. 9/b

Phone: +36 1 210-9808  
Fax: +36 1 210-9801  
VAT Nr.: 18294011-2-07  
E-mail: info@hfip.hu  
Web: www.hfip.hu

# *DPN Advisory Board*



- Use the power of DPN to address an issue or solve a problem.
- Education & Training together
- Joint projects have a higher chance
- Stronger influence in the IWT sector
- Port digitalisation, renewable energy, mitigation of climate change



# *Danube ports development*



## *Target groups:*

- *local public authorities (5)*
- *national public authorities (10)*
- *infrastructure and (public) service providers (15)*
- *higher education and research (7)*
- *SMEs (40)*
- *business support organisations (10)*
- *International organisations under inter-national law (3)*

## *Objective*

*The objective is to develop strategies, **master plans**, organisational structure and case studies according to an innovative approach integrating Danube ports development into the context of regional economic and rural development, with special focus of two important market segments, the transportation of agricultural products and the river cruise industry, while reinforcing and capitalising on Danube Ports Network (DPN) as a coordination and cooperation platform for an **integrated development of Danube ports.***



## *Port development master plan*

*Development of alternative fuel filling stations, Port Information System, Support for digital development of ports, Dissemination of digital good practices, Digital co-operation of the Danube-Main-Rhine region, Adaptation of port development strategies to waterway development (Master Plan) strategies, operation, elaboration of a guide for the transshipment of certain goods in the port, preparation of the Baja OKK capacity expansion Csepel OKK capacity development II. Phase I, Development of a support scheme to improve the loading and storage capacities of regional and local ports, Capacity building of Mohács OKK, Active investment promotion policy, Financial regulatory incentive system, Municipal planning, Organization of co-operation conferences, concept development, port classification system, port development CBA guide, port development state aid guide force majeure financing system, Port and Water Freight Analytical and Training Institute, promotion of the port profession with young people, creation of a visitor center, development of related training Authority training program, Legislation review, Environmental sustainability in ports*

# Master Plan for Danube fairway



DUNAI HAJÓS Konzorcium



*Will the political leadership be able to create a new institution for domestic water science that is lagging behind as a result of VITUKI's execution?*

**If not, there will be no sustainable water management in our country without intellectual leadership and competence.**

Megrendelő:




NEMZETI  
INFRASTRUKTÚRA  
FEJLESZTŐ ZRT.

# Activity T3.2

Case Study Agricultural Products  
(Ports & Access Infrastructure Needs)

Responsible partner: HFIP



**DIONYSUS** – Integrating Danube  
Region into Smart & Sustainable  
Intermodal Transport Chains

# Activity T3.2 - Summary



- *Start 01/10/2020 – End 30/09/2022*
- *The overall aim of A.T3.2 is to map out the agricultural products flows, sketch future trade flows, assess port infrastructure/superstructure, road & rail accessibility infrastructure needs.*
- *Country reports following a uniform assessment methodology will be prepared and then the findings will be included in DR level summary reports. Regional workshops will evaluate the role and contribution of ports to increased agricultural production and transport.*
- *Based on the inputs of the events, a strategy and recommendations will be elaborated for optimizing agricultural production and waterborne transportation. Derived from this strategy, 3 logistic cases will be selected and elaborated for the main multi-/intermodal transport routes for agricultural products.*
- *HFIP coordinates A.T3.2. organizes the international conference (O.T3.2) and elaborates the Strategy & Recommendations (O.T3.3).*

# *Digital life buoy - Improving the skills and preparedness of labor market actors to use automation technologies in port logistics*

## *The project goal:*

- *to develop the adaptability of employers and employees in the port sector to technological developments*

## *The consortium implementing the project:*

- *Hungarian Federation of Danube Ports*
- *Ecotech Nonprofit Zrt.*

## *Duration of the project:*

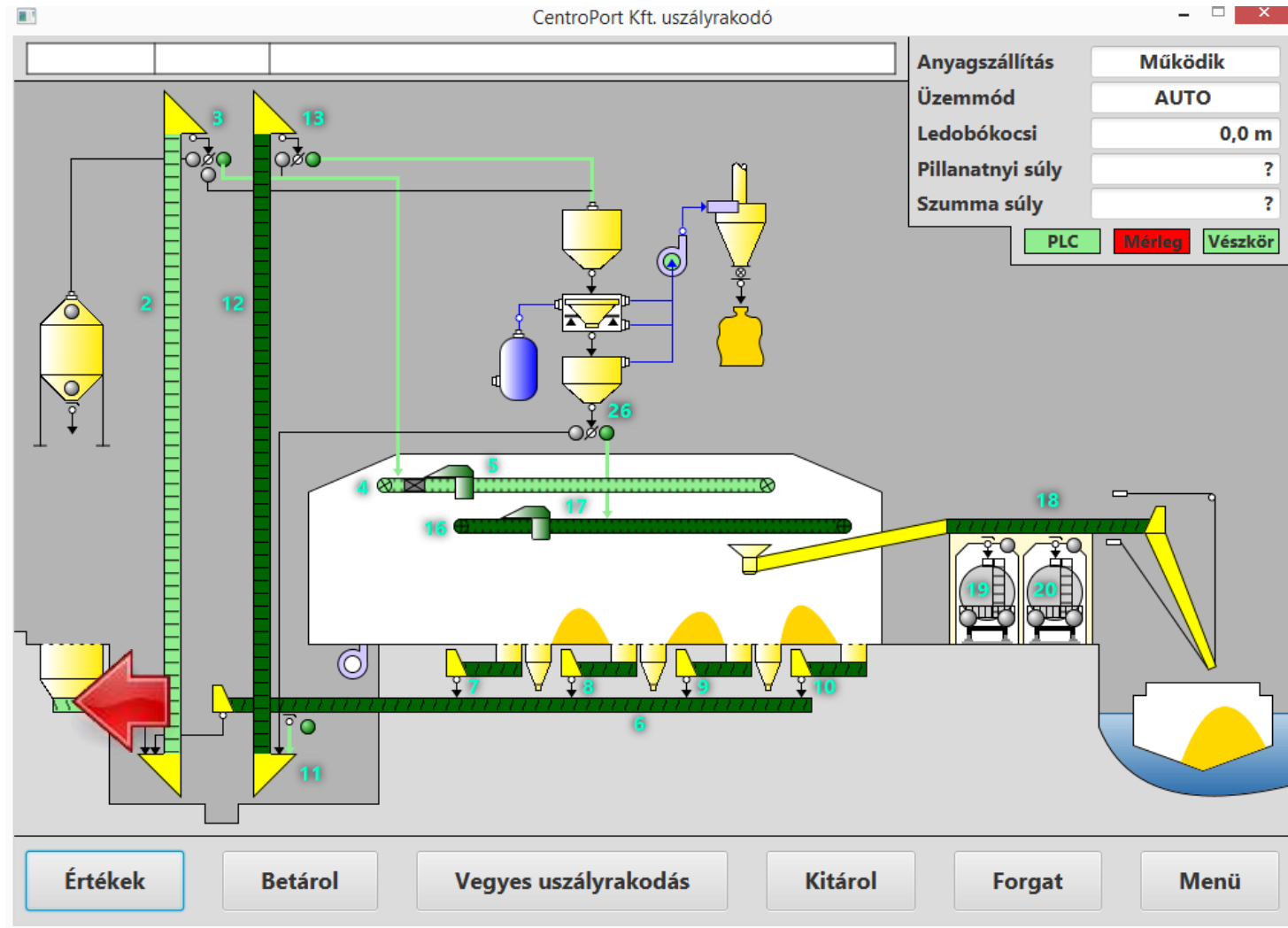
- *2020.03.01 – 2021.08.31*

*Implementation of trainings: 2 x 25-hour trainings (10-15 people) - digital competence development, digital mentor training*

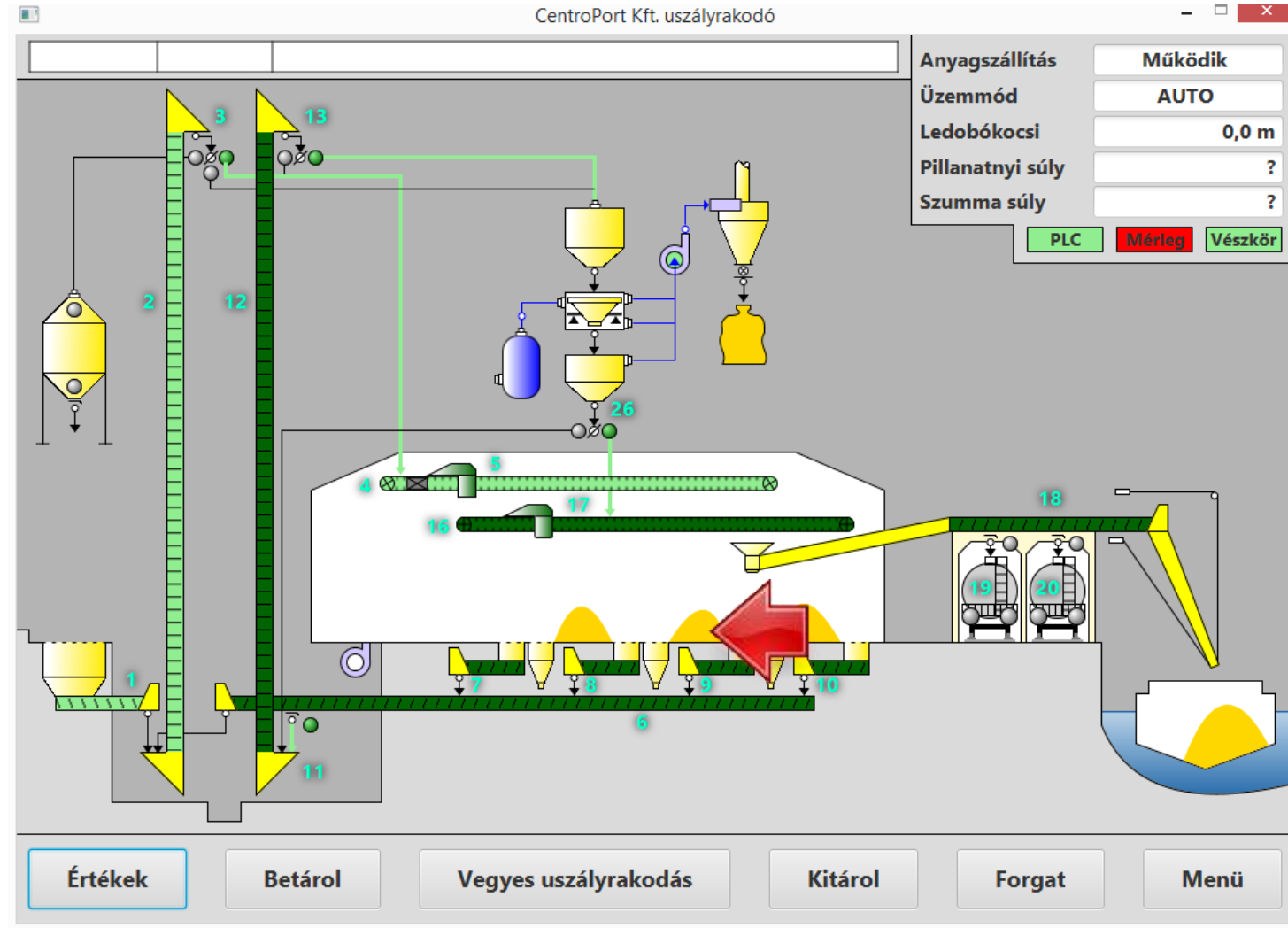


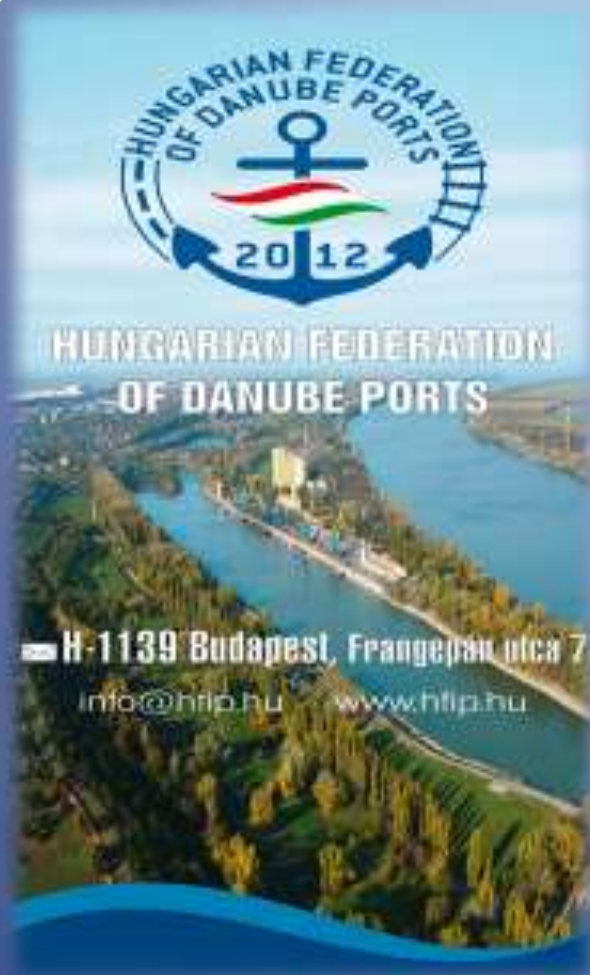


# Warehousing from a truck



# Discharging from warehouse to ship

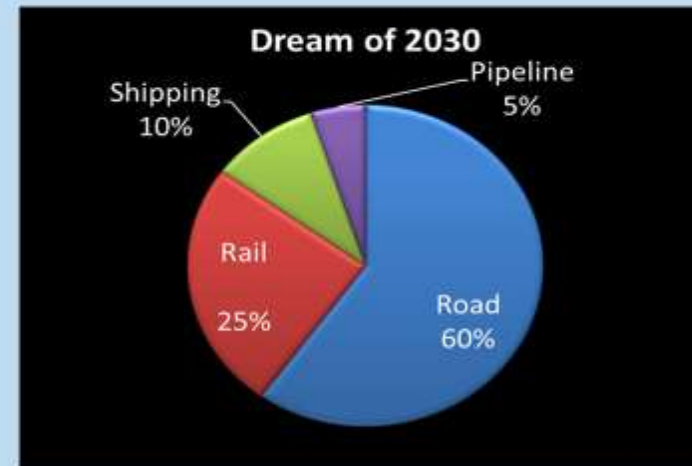
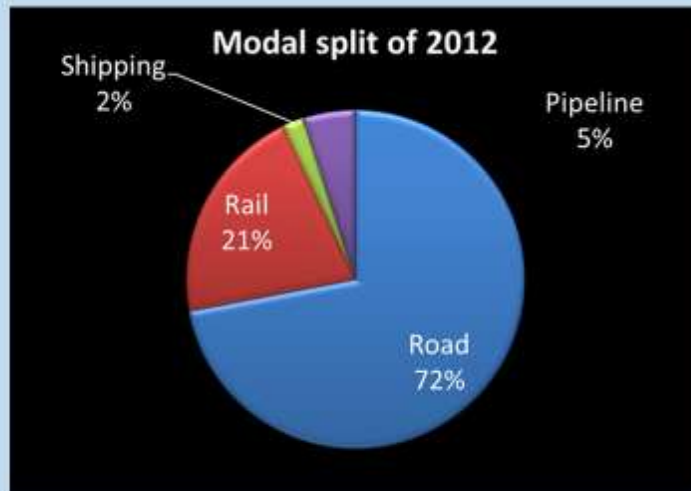




*Hungarian ports got proper investments  
(spent 123 million EUR),  
and the high quality service  
**to be paid***



# *Masterplans for the future*



CAPT. SZALMA 7



**Capt. Béla Szalma**  
**President**

Hungarian federation of Danube Ports  
H-1139 Budapest, Forgách u.9/B II.em.  
Mobil: 36-30-9412866  
E [elnok@hfip.hu](mailto:elnok@hfip.hu) W [www.hfip.hu](http://www.hfip.hu)

**DIONYSUS** – Integrating Danube  
Region into Smart & Sustainable  
Intermodal Transport Chains

An aerial photograph of a large-scale construction project on the Danube river. In the foreground, a long pier or dock is under construction, with several yellow cranes positioned along its length. The river is wide and flows from the left towards the right. In the background, a long bridge with multiple spans crosses the river. The surrounding landscape is a mix of green trees and some buildings, suggesting an urban or industrial area. The sky is clear and bright.