



Save time & emissions
Every port call

Danube Port Days
04-Oct-2022

CONFIDENTIAL



Objectives & Agenda

- PortXchange in the Port of Rotterdam
- Similarities and disparities with the Danube River Ports ecosystem
- Our approach and proposed action plan

Folie 2

an0

Port call + individual solutions for each party

abhishek nair; 2022-09-21T07:14:05.355

PortXchange introduction

Mission

We believe

- Sustainability
- Operational efficiency
- Digitalization

will go hand in hand shaping the future of shipping

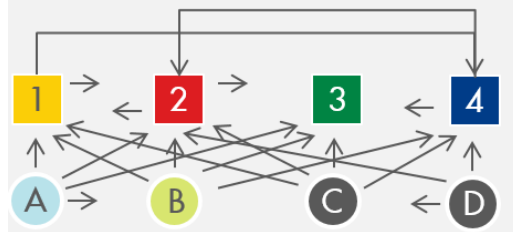
Spun off from Port of Rotterdam, we are on a mission to work with the shipping industry to connect port communities worldwide and reduce emissions at large scale and low cost

Purpose driven – impact oriented



The problems we see in ports globally

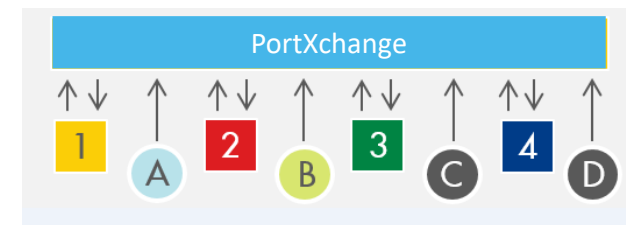
Current state in many ports



- (1) Terminal – (A) Schedules
- (2) Vessel – (B) ETA/ETD
- (3) Authority – (C) Pilots/Tugs
- (4) Service Providers – (D) bunkering

Often ports face fragmented information that hampers a clear view of the different activities of a port call

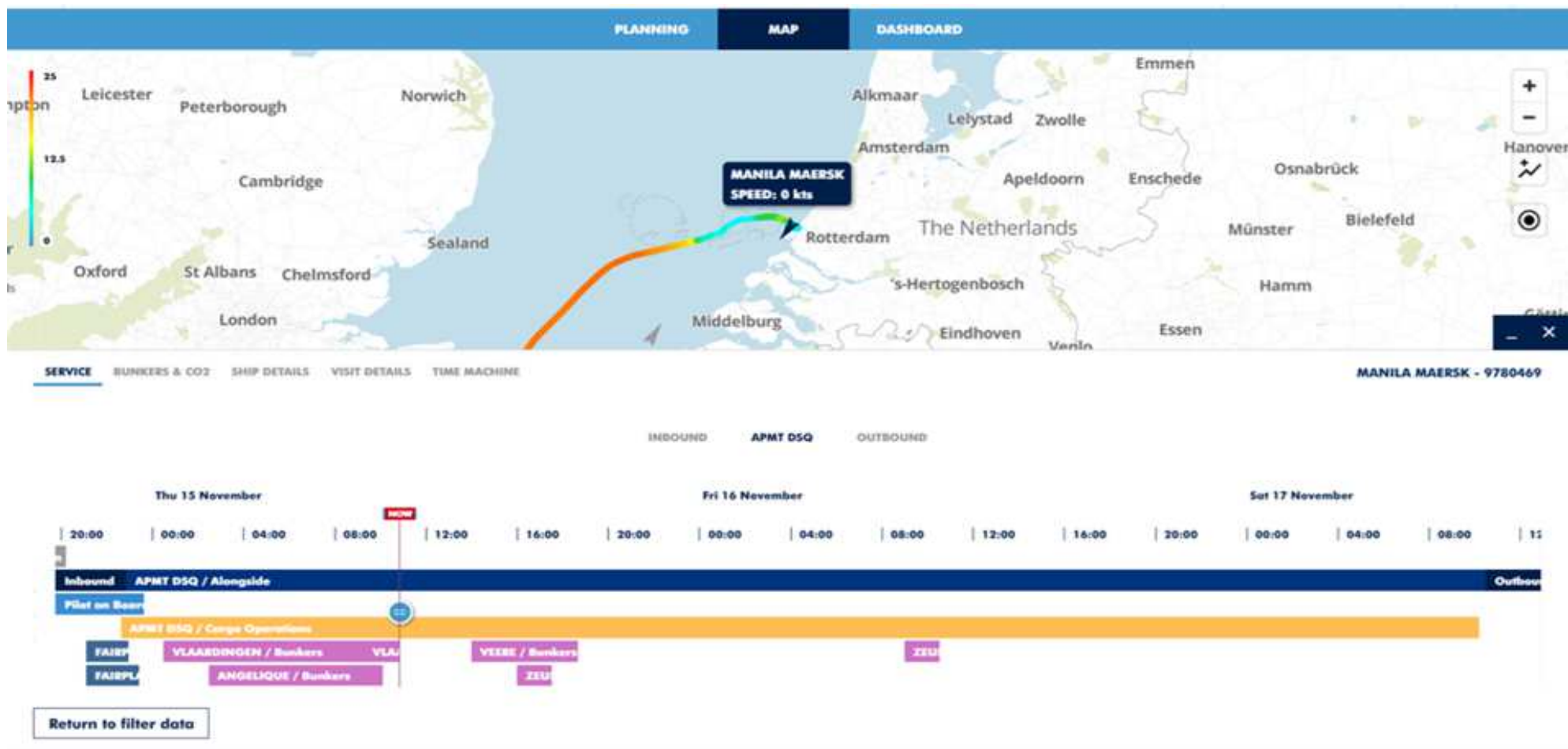
Future State



- (1) Terminal – (A) Schedules
- (2) Vessel – (B) ETA/ETD
- (3) Authority – (C) Pilots/Tugs
- (4) Service Providers – (D) Bunkering

By connecting all relevant port community players on one platform, PortXchange will support data sharing and collaboration in the port

Pillar 1 - Shared view of operational planning

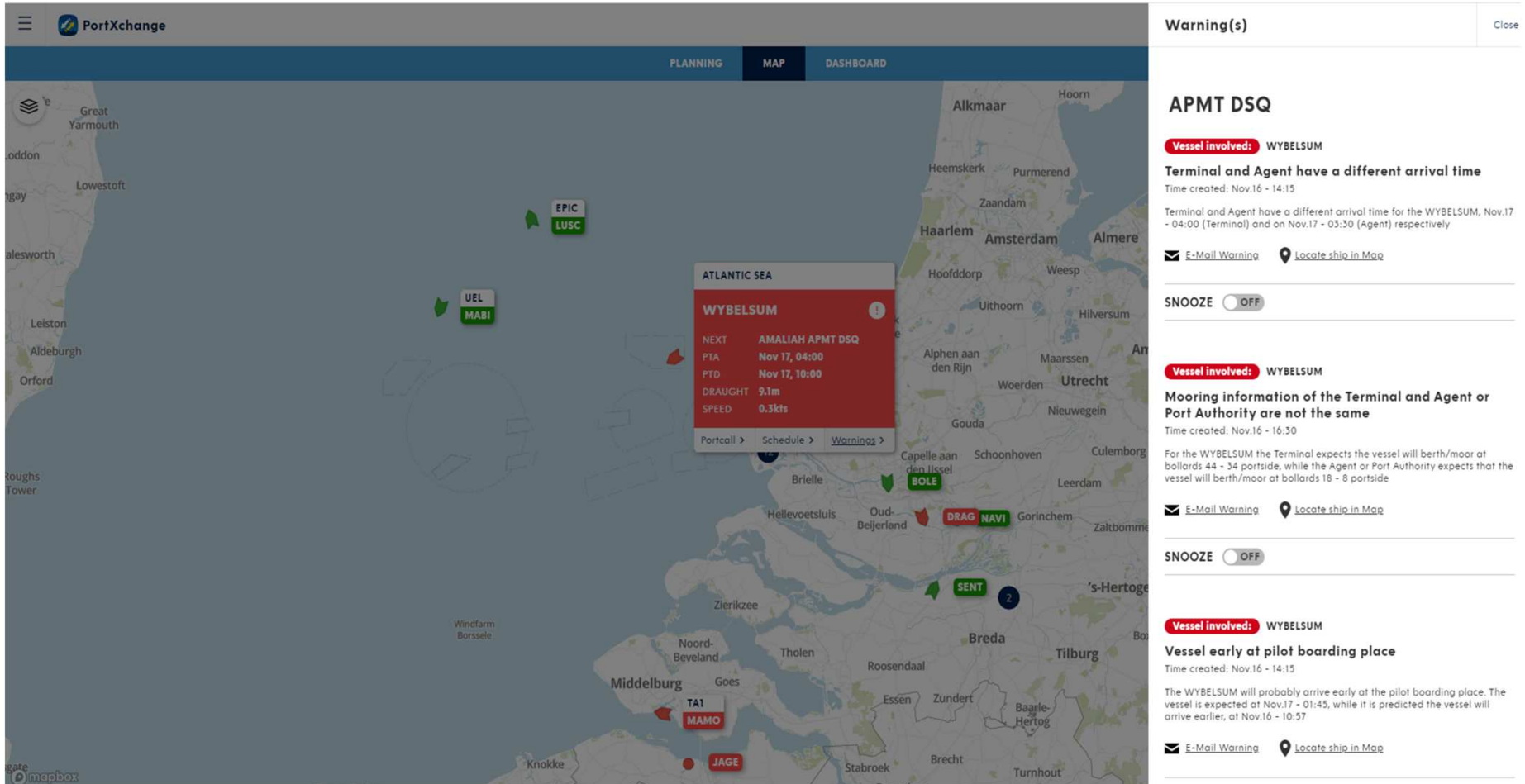


an0

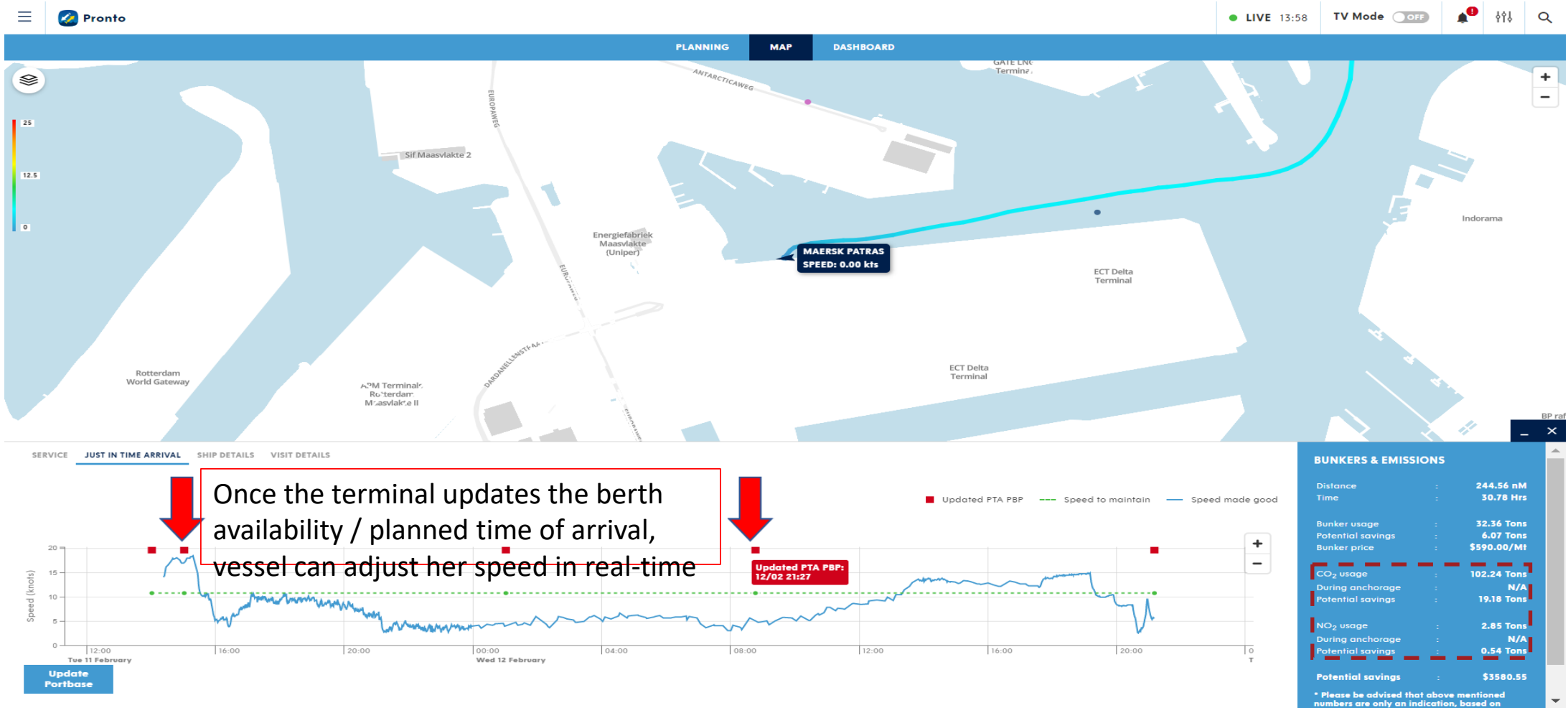
Use Synchronizer

abhishek nair; 2022-09-21T07:33:42.012

Pillar 2 - Timely notifications and warnings



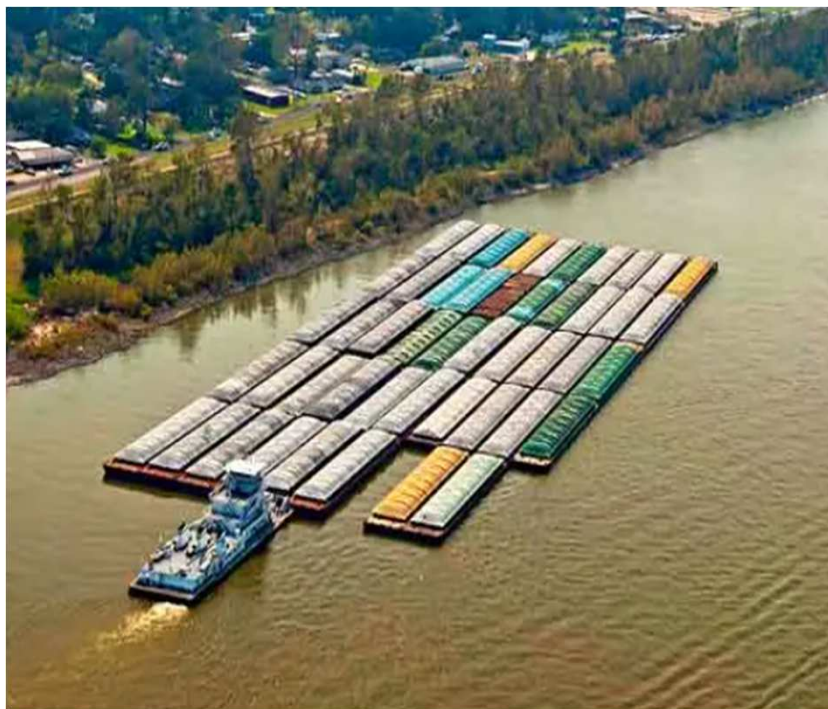
Pillar 3 – Just In Time Arrivals to eliminate waiting time at anchorage that drives operational efficiency, lesser congestion and a greener port



Supporting over 100.000 port calls worldwide



Bespoke solutions tailored to industry and client's needs



Improve utilization rates and productivity of client's assets and increase customer satisfaction through the use of AI-enabled planning tools for proactive decision-making.

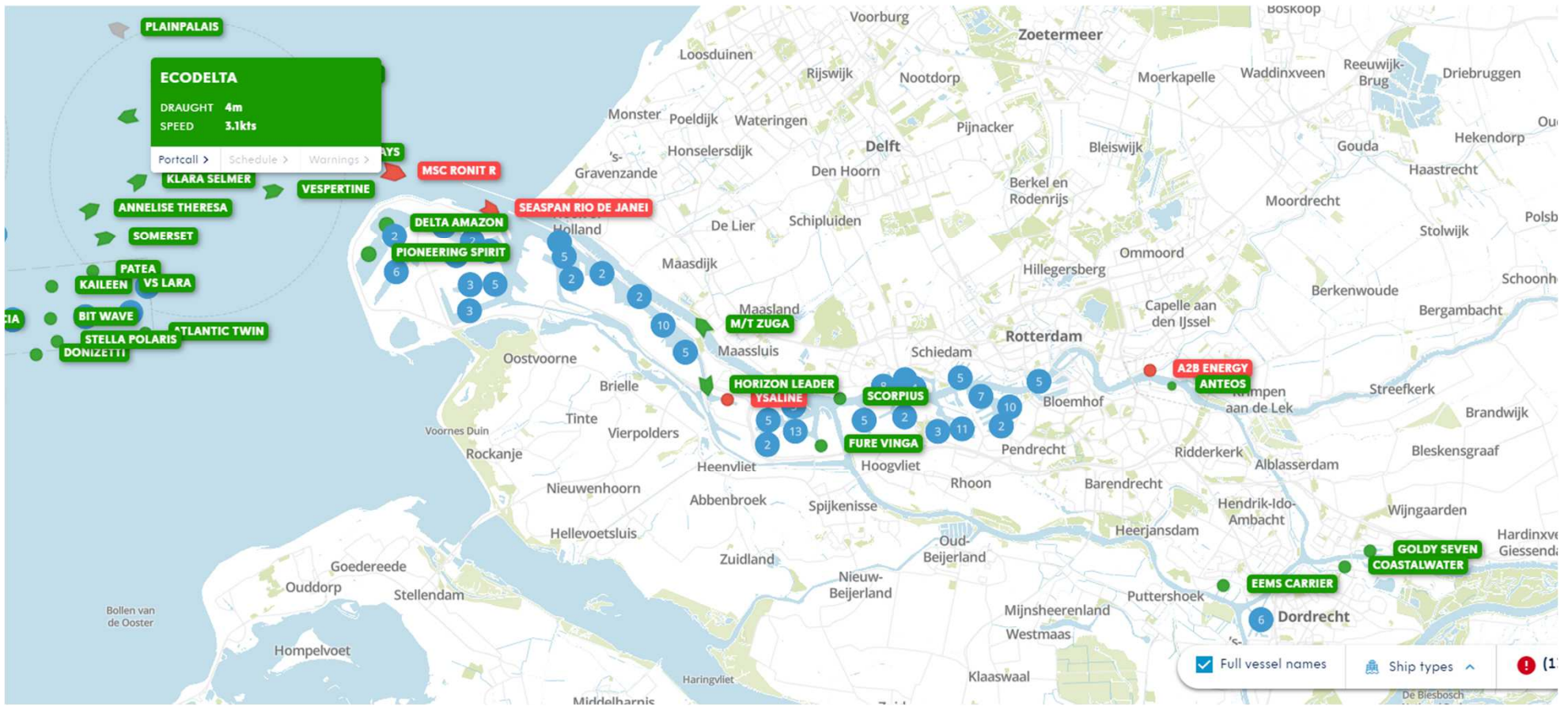


Folie 9

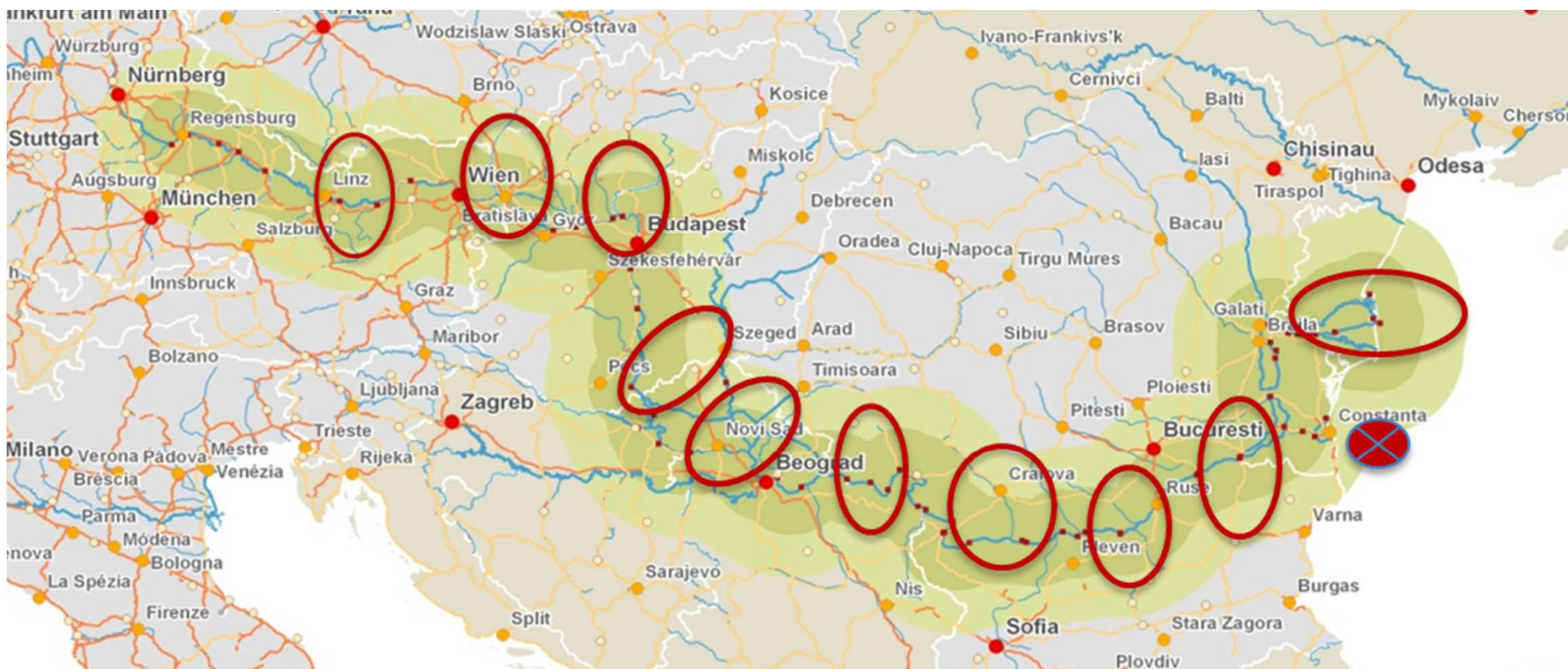
- an0** Include reference to Miss river
abhishek nair; 2022-09-21T07:08:46.112
- an1** Traffic and characteristics
abhishek nair; 2022-09-21T07:09:02.415

Bespoke solutions tailored to industry and client's needs

Similarities and disparities with the Danube River Ports ecosystem



Similarities and disparities with the Danube River Ports ecosystem



Courtesy : © Pro Danube

an0

Container vs dry bulk

abhishek nair; 2022-09-21T07:26:07.167

Addressing the essential needs of a multi-port ecosystem

INBOUND

Close X

Start

Event	Source	Time	Last updated
<div><div></div><div></div><div></div><div></div></div> ATAPilotBoardingPlace	Ais/AIS	Mar.19 - 12:39	Mar.19 - 12:40
<div><div></div><div></div><div></div><div></div></div> ATPilotOnBoard	Pilot/Port of Algeciras	Mar.19 - 12:39	Mar.19 - 12:39
<div><div></div><div></div><div></div><div></div></div> PTAPilotBoardingPlace	Port Authority/Port of Algeciras	Mar.19 - 12:42	Mar.19 - 12:13
<div><div></div><div></div><div></div><div></div></div> ETAPilotBoardingPlace	Ais/Pronto AIS Predictor	Mar.19 - 12:52	Mar.19 - 12:01
<div><div></div><div></div><div></div><div></div></div> PTAPilotBoardingPlace	Derived/Predictor (based on Terminal)	Mar.19 - 12:48	Mar.19 - 11:25
<div><div></div><div></div><div></div><div></div></div> ETAPilotBoardingPlace	Carrier/Maersk Coms4T	Mar.18 - 22:00	Mar.15 - 04:45
<div><div></div><div></div><div></div><div></div></div> ETPilotOnBoard	Pilot/Port of Algeciras	Mar.19 - 12:42	Mar.19 - 12:32
<div><div></div><div></div><div></div><div></div></div> ATAPort	Port Authority/Port of Algeciras	Mar.19 - 12:39	Mar.19 - 12:43
<div><div></div><div></div><div></div><div></div></div> ATAPort	Ais/AIS	Mar.19 - 12:18	Mar.19 - 12:28
<div><div></div><div></div><div></div><div></div></div> ATAPort	Agent/Marmedsa - ESALG - Agent	Mar.19 - 11:00	Mar.19 - 17:41
<div><div></div><div></div><div></div><div></div></div> ETAPort	Agent/Marmedsa - ESALG - Agent	Mar.19 - 13:31	Mar.18 - 13:36

End

Event	Source	Time	Last updated
<div><div></div><div></div><div></div><div></div></div> ATABerth	Terminal/Navis APMT Algeciras	Mar.19 - 13:30	Mar.19 - 13:33
<div><div></div><div></div><div></div><div></div></div> ATABerth	Ais/AIS	Mar.19 - 13:22	Mar.19 - 13:34
<div><div></div><div></div><div></div><div></div></div> ATABerth	Port Authority/Port of Algeciras	Mar.19 - 13:12	Mar.19 - 13:12
<div><div></div><div></div><div></div><div></div></div> ETABerth	Terminal/Navis APMT Algeciras	Mar.19 - 13:30	Mar.19 - 13:57
<div><div></div><div></div><div></div><div></div></div> ETABerth	Port Authority/Port of Algeciras	Mar.19 - 13:36	Mar.19 - 13:02
<div><div></div><div></div><div></div><div></div></div> ETABerth	Predictor/Predictor	Mar.19 - 13:21	Mar.19 - 12:41
<div><div></div><div></div><div></div><div></div></div> ETABerth	Agent/Port of Algeciras	Mar.19 - 13:00	Mar.19 - 11:27
<div><div></div><div></div><div></div><div></div></div> ETABerth	Carrier/Maersk Coms4T	Mar.19 - 00:01	Mar.10 - 12:30
<div><div></div><div></div><div></div><div></div></div> ATPilotDisembarked	Pilot/Port of Algeciras	Mar.19 - 13:29	Mar.19 - 13:34

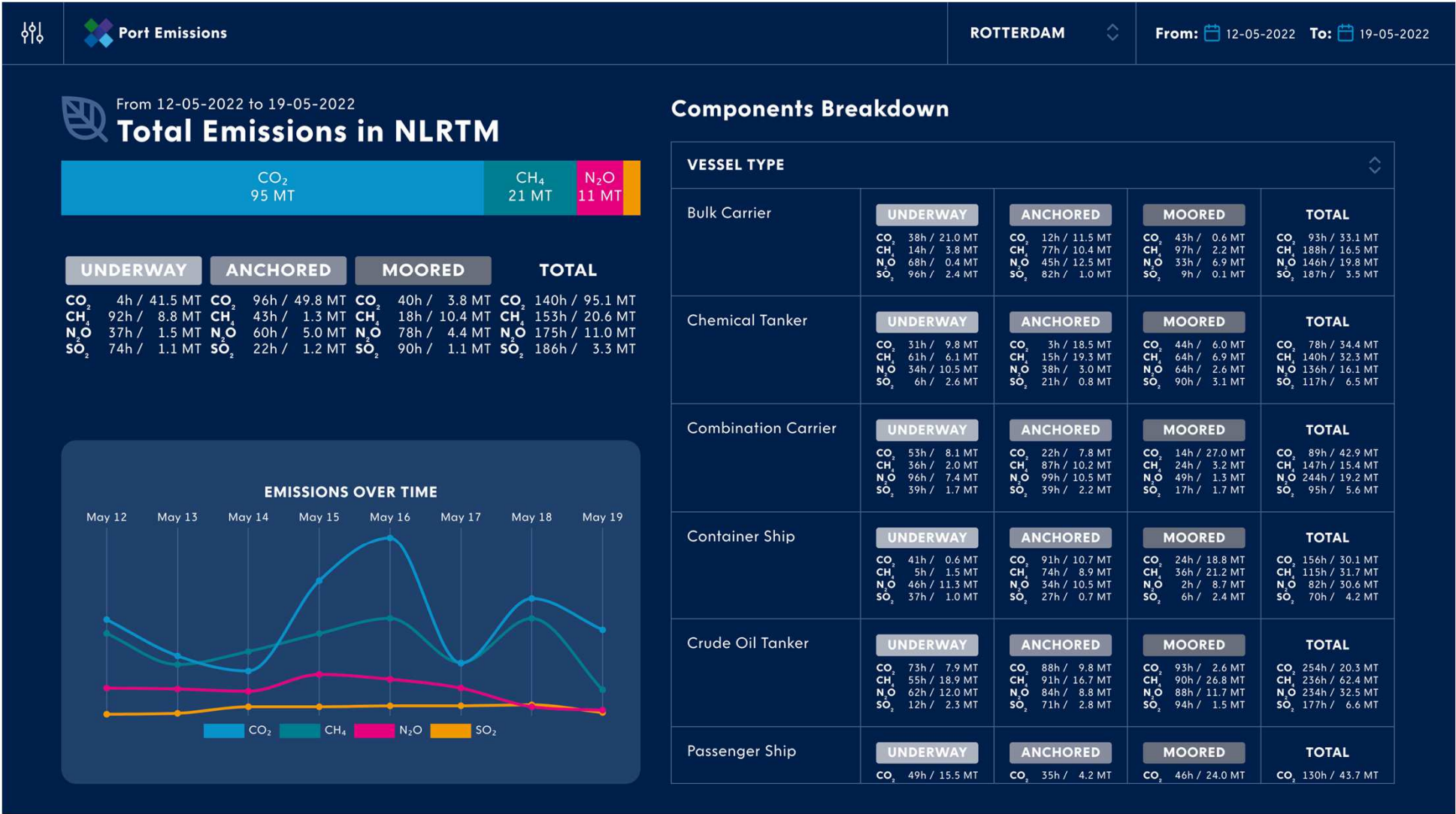
Pillar 4 - Network effects

- Fostering co-operation between ports while staying maintaining a healthy competition
 - Better utilization of fixed infrastructure
 - Eases pressure off road and rail transport networks
- Facilitate Synchro-modality
- Drives economic growth and employment for local communities in the region.
- Greenhouse gas Emissions per unit transport work reduced significantly

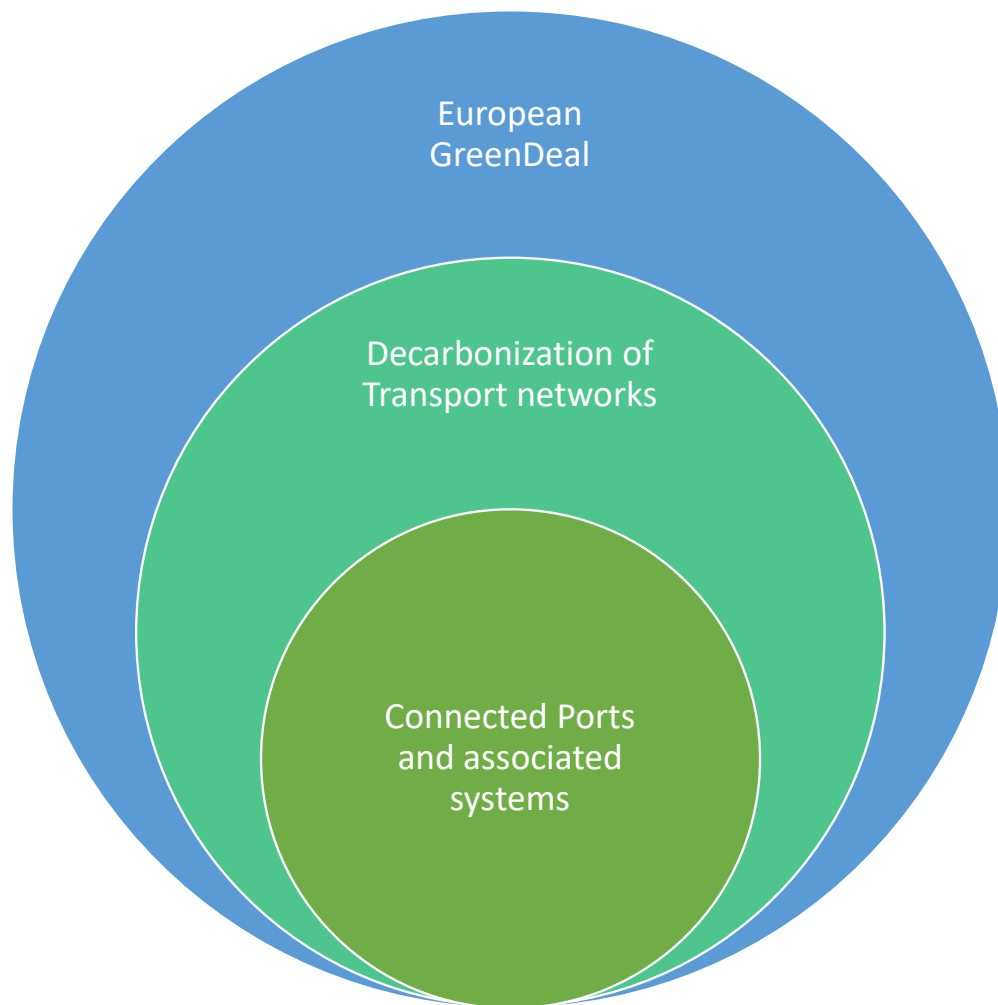
Folie 14

- an0** No congestion due to less cargo
abhishek nair; 2022-09-21T07:24:50.022
- an1** Include competition
abhishek nair; 2022-09-21T07:25:13.032
- an2** Foster cooperation
abhishek nair; 2022-09-21T07:25:21.621
- an3** Facilitate Synchromodality
abhishek nair; 2022-09-21T07:34:01.573

Marine Emissions Dashboard



Towards a connected ports ecosystem...



A digital port is a connected port

A connected port is one which harnesses the collective expertise of manpower, AI and machinery to drive operational efficiency

An operationally efficient port is a greener and safer port

PortXchange introduction

Mission

To become world leader in sustainable portcalls

